



**Noise Monitoring Result**

**Day Time (0700 - 1900hrs on normal weekdays)**

Location: M1a - Harbour Road Sports Centre

Date	Time	Weather	Measurement Noise Level			Baseline Level	Construction Noise Level	Limit Level
			Leq	L10	L90	Leq	Leq	Leq
Unit: dB(A), (30-min)								
29/11/12	10:25	Cloudy	72.6	75.0	68.0	72	62	75
04/12/12	10:44	Cloudy	72.8	75.5	68.5	72	64	75
11/12/12	10:05	Fine	72.5	75.5	66.5	72	61	75
17/12/12	9:55	Fine	73.3	76.0	69.0	72	67	75
27/12/12	10:25	Cloudy	71.6	74.5	66.0	72	72	75

Location: M2b - Noon-day gun area

Date	Time	Weather	Measurement Noise Level			Baseline Level	Construction Noise Level	Limit Level
			Leq	L10	L90	Leq	Leq	Leq
Unit: dB(A), (30-min)								
29/11/12	11:00	Cloudy	73.1	76.0	69.5	68	72	75
04/12/12	11:27	Cloudy	71.3	75.0	67.0	68	69	75
11/12/12	10:50	Fine	72.6	77.0	68.0	68	71	75
17/12/12	10:35	Fine	75.1	77.5	70.5	68	74	75
27/12/12	11:10	Cloudy	73.5	76.5	69.0	68	72	75

Location: M3a - Tung Lo Wan Fire Station

Date	Time	Weather	Measurement Noise Level			Baseline Level	Construction Noise Level	Limit Level
			Leq	L10	L90	Leq	Leq	Leq
Unit: dB(A), (30-min)								
29/11/12	13:00	Cloudy	67.1	69.0	64.0	69	67	75
04/12/12	13:00	Cloudy	67.3	69.0	64.5	69	67	75
11/12/12	11:03	Fine	66.9	68.0	63.5	69	67	75
17/12/12	11:25	Fine	69.4	71.0	67.0	69	61	75
27/12/12	13:00	Cloudy	67.2	69.0	64.5	69	67	75

Location: M4b - Victoria Centre

Date	Time	Weather	Measurement Noise Level			Baseline Noise Level	Construction Noise Level	Limit Level
			Leq	L10	L90	Leq	Leq	Leq
Unit: dB(A), (30min)								
29/11/12	13:40	Cloudy	70.7	72.0	68.0	67	68	75
04/12/12	13:40	Cloudy	72.0	73.0	69.5	67	70	75
11/12/12	13:35	Fine	70.9	72.0	68.5	67	68	75
17/12/12	13:00	Fine	73.3	74.5	71.0	67	72	75
27/12/12	13:40	Cloudy	75.5	79.5	69.5	67	75	75

Location: M5b - City Garden

Date	Time	Weather	Measurement Noise Level			Baseline Level	Construction Noise Level	Limit Level
			Leq	L10	L90	Leq	Leq	Leq
Unit: dB(A), (30min)								
29/11/12	14:40	Cloudy	72.6	74.0	70.0	68	71	75
04/12/12	14:20	Cloudy	70.1	70.5	69.0	68	66	75
11/12/12	14:30	Fine	74.3	76.5	69.5	68	73	75
17/12/12	13:40	Fine	71.0	72.0	70.0	68	68	75
27/12/12	14:25	Cloudy	71.7	73.0	67.0	68	69	75

Location: M6 - HK Baptist Church Henrietta Secondary School

Date	Time	Weather	Measurement Noise Level			Baseline Level	Construction Noise Level	Limit Level
			Leq	L10	L90	Leq	Leq	Leq
Unit: dB(A), (30-min)								
29/11/12	15:25	Cloudy	74.8	76.0	73.0	71	73	70
04/12/12	15:10	Cloudy	73.4	74.3	71.3	71	70	70
11/12/12	15:00	Fine	74.0	75.2	72.5	71	71	65
17/12/12	14:30	Fine	73.7	76.0	71.5	71	71	65
27/12/12	15:00	Cloudy	75.1	76.0	73.0	71	73	70

\*Remarks: The limit level for M6 was adjusted from 70 dB(A) to 65 dB(A) from 7 Dec 2012 to 20 Dec 2012 during examination period.



### Noise Monitoring Result

#### Day Time (0700 - 1900hrs on normal weekdays)

Location: M7e - International Finance Centre (Eastern End of Podium) (Reference Station)

Date	Time	Weather	Measurement Noise Level			Baseline Level	Construction Noise Level	Limit Level
			Leq	L10	L90	Leq	Leq	Leq
Unit: dB(A), (30-min)								
29/11/12	08:15	Cloudy	66.7	70.0	60.0	67	67	N/A
04/12/12	08:18	Cloudy	68.0	70.0	64.0	67	62	N/A
11/12/12	8:35	Fine	71.3	73.5	64.5	67	69	N/A
17/12/12	8:35	Fine	70.9	73.5	65.5	67	69	N/A
27/12/12	8:00	Cloudy	66.2	68.5	63.0	67	66	N/A

Location: M7w - International Finance Centre (Western End of Podium)

Date	Time	Weather	Measurement Noise Level			Baseline Level	Construction Noise Level	Limit Level
			Leq	L10	L90	Leq	Leq	Leq
Unit: dB(A), (30-min)								
29/11/12	09:00	Cloudy	63.4	66.5	59.5	69	63	75
04/12/12	08:54	Cloudy	67.1	68.0	65.0	69	67	75
11/12/12	8:00	Fine	65.4	67.8	50.9	69	65	75
17/12/12	8:00	Fine	67.0	68.5	65.0	69	67	75
27/12/12	8:35	Cloudy	67.0	68.0	60.5	69	67	75

Location: M8 - City Hall

Date	Time	Weather	Measurement Noise Level			Baseline Level	Construction Noise Level	Limit Level
			Leq	L10	L90	Leq	Leq	Leq
Unit: dB(A), (30-min)								
29/11/12	09:30	Cloudy	63.0	65.0	57.5	64	63	70
04/12/12	09:47	Cloudy	62.4	64.5	58.0	64	62	70
11/12/12	9:15	Fine	64.8	67.5	58.5	64	58	70
17/12/12	9:10	Fine	62.6	65.0	58.5	64	63	70
27/12/12	9:35	Cloudy	74.5	76.0	71.3	64	74	70



**Noise Monitoring Result**

**Day Time (0700 - 1900hrs on normal weekdays)**

Location: M1a - Harbour Road Sports Centre

Date	Time	Weather	Measurement Noise Level			Baseline Level	Construction Noise Level	Limit Level
			Leq	L10	L90	Leq	Leq	Leq
Unit: dB(A), (30-min)								
03/01/13	10:35	Fine	75.7	77.5	69.0	72	73	75
08/01/13	16:00	Fine	73.1	75.5	68.5	72	66	75
15/01/13	10:10	Fine	73.3	76.0	68.0	72	67	75
24/01/13	10:10	Fine	81.0	82.0	79.0	72	80	75

Location: M2b - Noon-day gun area

Date	Time	Weather	Measurement Noise Level			Baseline Level	Construction Noise Level	Limit Level
			Leq	L10	L90	Leq	Leq	Leq
Unit: dB(A), (30-min)								
03/01/13	11:20	Fine	74.4	76.5	71.0	68	73	75
08/01/13	16:50	Fine	73.8	75.0	70.5	68	73	75
15/01/13	10:49	Fine	71.3	72.5	68.5	68	69	75
24/01/13	11:20	Fine	70.8	71.5	68.5	68	68	75

Location: M3a - Tung Lo Wan Fire Station

Date	Time	Weather	Measurement Noise Level			Baseline Level	Construction Noise Level	Limit Level
			Leq	L10	L90	Leq	Leq	Leq
Unit: dB(A), (30-min)								
03/01/13	13:00	Fine	67.1	68.5	64.5	69	67	75
08/01/13	13:00	Fine	67.6	69.5	64.5	69	68	75
15/01/13	11:30	Fine	68.8	70.5	66.0	69	69	75
24/01/13	13:00	Fine	67.3	69.0	64.5	69	67	75

Location: M4b - Victoria Centre

Date	Time	Weather	Measurement Noise Level			Baseline Noise Level	Construction Noise Level	Limit Level
			Leq	L10	L90	Leq	Leq	Leq
Unit: dB(A), (30min)								
03/01/13	13:40	Fine	74.9	79.0	69.0	67	74	75
08/01/13	09:05	Fine	72.5	73.5	70.5	67	71	75
15/01/13	13:00	Fine	71.9	73.0	69.5	67	70	75
24/01/13	13:35	Fine	73.1	74.5	70.5	67	72	75

Location: M5b - City Garden

Date	Time	Weather	Measurement Noise Level			Baseline Level	Construction Noise Level	Limit Level
			Leq	L10	L90	Leq	Leq	Leq
Unit: dB(A), (30min)								
03/01/13	14:20	Fine	66.8	68.5	63.5	68	67	75
08/01/13	09:55	Fine	69.0	70.0	67.0	68	62	75
15/01/13	14:00	Fine	69.7	71.0	66.0	68	65	75
24/01/13	14:20	Fine	72.0	73.5	66.5	68	70	75



**Noise Monitoring Result**

**Day Time (0700 - 1900hrs on normal weekdays)**

Location: M6 - HK Baptist Church Henrietta Secondary School

Date	Time	Weather	Measurement Noise Level			Baseline Level	Construction Noise Level	Limit Level
			Leq	L10	L90	Leq	Leq	Leq
Unit: dB(A), (30-min)								
03/01/13	15:10	Fine	74.1	75.0	72.0	71	71	70
08/01/13	10:40	Fine	74.4	75.5	72.5	71	72	70
15/01/13	14:35	Fine	74.1	75.5	72.0	71	71	70
24/01/13	15:00	Fine	74.1	75.0	72.0	71	71	70

Location: M7e - International Finance Centre (Eastern End of Podium) (Reference Station)

Date	Time	Weather	Measurement Noise Level			Baseline Level	Construction Noise Level	Limit Level
			Leq	L10	L90	Leq	Leq	Leq
Unit: dB(A), (30-min)								
03/01/13	8:00	Fine	68.8	71.5	64.0	67	64	N/A
08/01/13	13:40	Fine	74.3	77.0	71.5	67	73	N/A
15/01/13	8:35	Fine	74.3	77.5	68.5	67	73	N/A
24/01/13	8:35	Fine	75.8	78.5	70.0	67	75	N/A

Location: M7w - International Finance Centre (Western End of Podium)

Date	Time	Weather	Measurement Noise Level			Baseline Level	Construction Noise Level	Limit Level
			Leq	L10	L90	Leq	Leq	Leq
Unit: dB(A), (30-min)								
03/01/13	8:40	Fine	68.6	69.5	66.0	69	69	75
08/01/13	14:20	Fine	67.0	69.0	64.0	69	67	75
15/01/13	8:00	Fine	69.2	69.5	63.5	69	69	75
24/01/13	8:00	Fine	67.1	68.5	63.5	69	67	75

Location: M8 - City Hall

Date	Time	Weather	Measurement Noise Level			Baseline Level	Construction Noise Level	Limit Level
			Leq	L10	L90	Leq	Leq	Leq
Unit: dB(A), (30-min)								
03/01/13	9:45	Fine	62.3	65.0	58.0	64	62	70
08/01/13	15:10	Fine	61.7	63.5	58.0	64	62	70
15/01/13	9:00	Fine	62.8	64.5	59.0	64	63	70
24/01/13	9:15	Fine	62.2	64.5	57.5	64	62	70



**Noise Monitoring Result**

**Day Time (0700 - 1900hrs on normal weekdays)**

Location: M1a - Harbour Road Sports Centre

Date	Time	Weather	Measurement Noise Level			Baseline Level	Construction Noise Level	Limit Level
			Leq	L10	L90	Leq	Leq	Leq
Unit: dB(A), (30-min)								
29/01/13	10:24	Fine	79.7	80.0	74.0	72	79	75
07/02/13	10:35	Cloudy	72.4	75.5	66.5	72	59	75
15/02/13	10:35	Fine	71.8	74.5	66.5	72	72	75
19/02/13	11:15	Cloudy	72.1	74.5	66.5	72	72	75
26/02/13	10:25	Fine	75.0	76.0	68.5	72	72	75

Location: M2b - Noon-day gun area

Date	Time	Weather	Measurement Noise Level			Baseline Level	Construction Noise Level	Limit Level
			Leq	L10	L90	Leq	Leq	Leq
Unit: dB(A), (30-min)								
29/01/13	13:03	Fine	72.5	74.5	69.0	68	71	75
07/02/13	11:15	Cloudy	70.5	71.5	68.5	68	67	75
15/02/13	11:20	Fine	70.2	71.5	67.5	68	67	75
19/02/13	13:00	Fine	70.4	72.0	68.0	68	67	75
26/02/13	11:25	Fine	72.3	74.0	68.5	68	71	75

Location: M3a - Tung Lo Wan Fire Station

Date	Time	Weather	Measurement Noise Level			Baseline Level	Construction Noise Level	Limit Level
			Leq	L10	L90	Leq	Leq	Leq
Unit: dB(A), (30-min)								
29/01/13	13:47	Fine	67.8	69.5	64.0	69	68	75
07/02/13	13:00	Fine	67.3	69.0	64.0	69	67	75
15/02/13	13:00	Fine	67.0	68.5	64.5	69	67	75
19/02/13	13:40	Fine	67.7	69.0	65.5	69	68	75
26/02/13	13:00	Fine	66.9	68.5	64.5	69	67	75

Location: M4b - Victoria Centre

Date	Time	Weather	Measurement Noise Level			Baseline Noise Level	Construction Noise Level	Limit Level
			Leq	L10	L90	Leq	Leq	Leq
Unit: dB(A), (30min)								
29/01/13	14:33	Fine	70.1	71.5	68.0	67	67	75
07/02/13	13:45	Fine	72.7	75.0	69.0	67	71	75
15/02/13	13:45	Fine	70.3	71.5	68.0	67	67	75
19/02/13	14:30	Fine	72.0	74.0	69.0	67	70	75
26/02/13	13:35	Fine	71.0	72.5	69.0	67	69	75

Location: M5b - City Garden

Date	Time	Weather	Measurement Noise Level			Baseline Level	Construction Noise Level	Limit Level
			Leq	L10	L90	Leq	Leq	Leq
Unit: dB(A), (30min)								
29/01/13	16:30	Fine	68.8	70.5	66.0	68	61	75
07/02/13	14:30	Fine	68.3	69.5	66.0	68	57	75
15/02/13	14:30	Fine	68.8	69.5	66.0	68	61	75
19/02/13	15:15	Fine	68.6	69.5	66.5	68	60	75
26/02/13	14:30	Fine	67.2	68.5	65.0	68	67	75



### Noise Monitoring Result

#### Day Time (0700 - 1900hrs on normal weekdays)

Location: M6 - HK Baptist Church Henrietta Secondary School

Date	Time	Weather	Measurement Noise Level			Baseline Level	Construction Noise Level	Limit Level
			Leq	L10	L90	Leq	Leq	Leq
Unit: dB(A), (30-min)								
29/01/13	15:18	Fine	74.4	75.5	72.5	71	72	70
07/02/13	15:15	Cloudy	73.6	75.0	71.5	71	70	65
15/02/13	15:10	Fine	73.0	74.5	71.0	71	69	65
19/02/13	16:00	Fine	74.0	74.5	71.5	71	71	65
26/02/13	15:00	Fine	73.7	74.5	71.5	71	71	65

Location: M7e - International Finance Centre (Eastern End of Podium) (Reference Station)

Date	Time	Weather	Measurement Noise Level			Baseline Level	Construction Noise Level	Limit Level
			Leq	L10	L90	Leq	Leq	Leq
Unit: dB(A), (30-min)								
29/01/13	8:06	Fine	72.0	73.5	68.5	67	70	N/A
07/02/13	8:00	Cloudy	71.9	73.0	70.0	67	70	N/A
15/02/13	08:00	Fine	67.7	69.0	65.5	67	60	N/A
19/02/13	9:00	Cloudy	75.2	77.0	71.5	67	75	N/A
26/02/13	8:35	Fine	72.1	73.0	70.0	67	71	N/A

Location: M7w - International Finance Centre (Western End of Podium)

Date	Time	Weather	Measurement Noise Level			Baseline Level	Construction Noise Level	Limit Level
			Leq	L10	L90	Leq	Leq	Leq
Unit: dB(A), (30-min)								
29/01/13	8:43	Fine	68.1	69.5	66.0	69	68	75
07/02/13	8:45	Cloudy	68.2	69.5	65.5	69	68	75
15/02/13	08:35	Fine	68.1	69.5	65.5	69	68	75
19/02/13	9:35	Cloudy	67.3	68.5	65.0	69	67	75
26/02/13	8:00	Fine	67.2	69.0	64.5	69	67	75

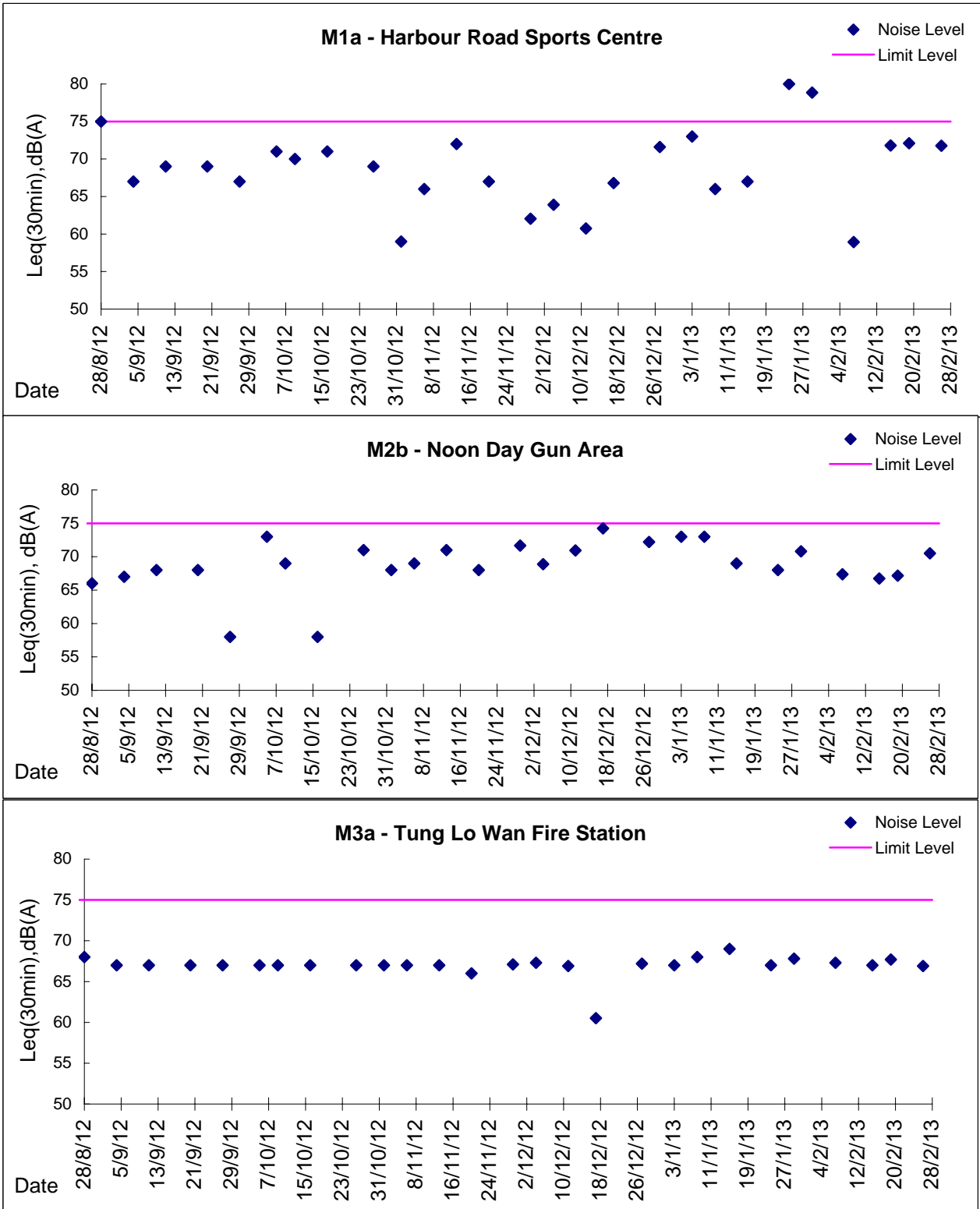
Location: M8 - City Hall

Date	Time	Weather	Measurement Noise Level			Baseline Level	Construction Noise Level	Limit Level
			Leq	L10	L90	Leq	Leq	Leq
Unit: dB(A), (30-min)								
29/01/13	9:38	Fine	62.3	64.0	59.0	64	62	70
07/02/13	9:35	Cloudy	60.6	63.0	56.5	64	61	70
15/02/13	09:40	Fine	65.7	66.0	58.0	64	61	70
19/02/13	10:25	Cloudy	60.7	62.5	58.0	64	61	70
26/02/13	9:30	Fine	63.2	65.0	60.0	64	63	70



Graphic Presentation of Noise Monitoring Result

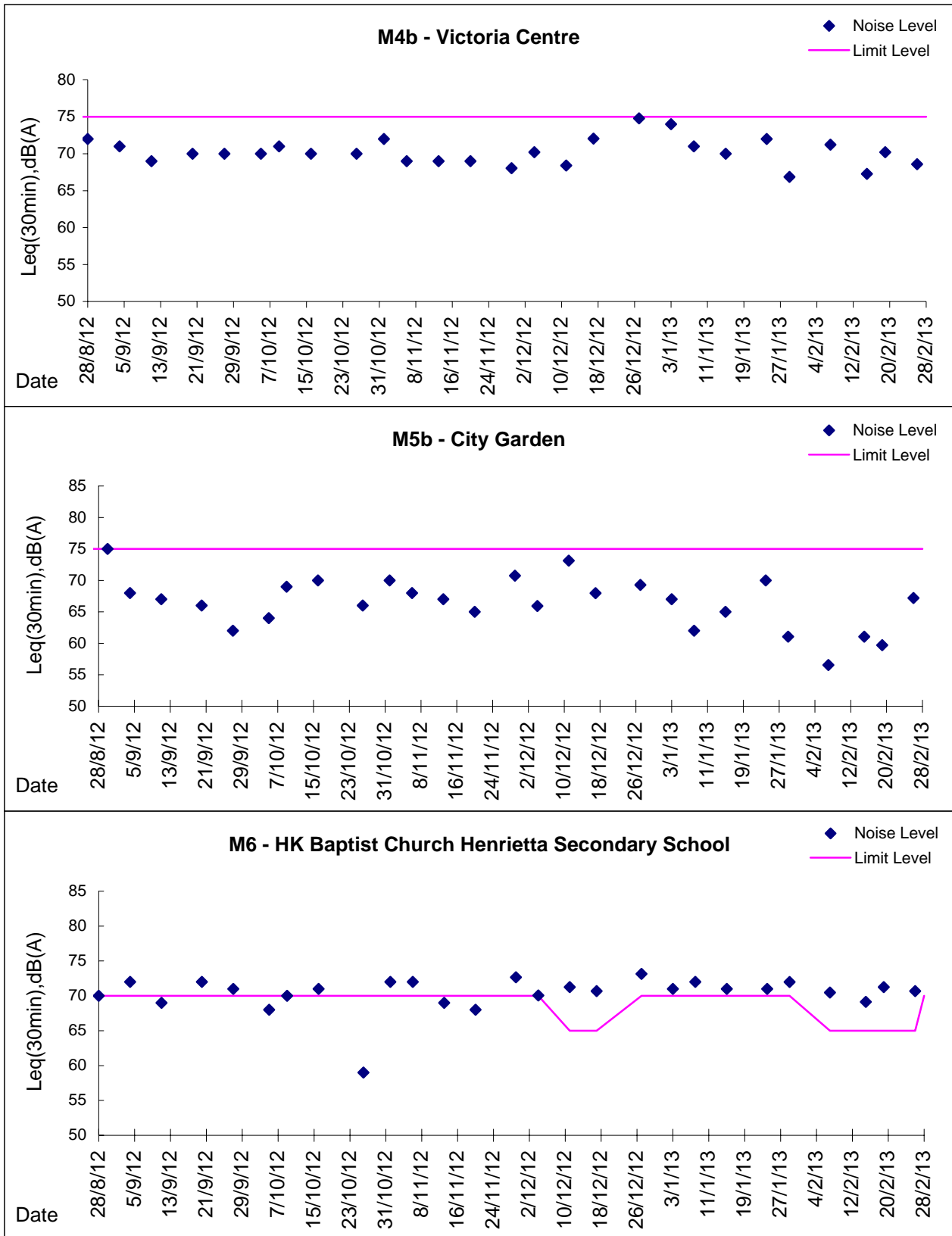
Day Time (0700 - 1900hrs on normal weekdays)





**Graphic Presentation of Noise Monitoring Result**

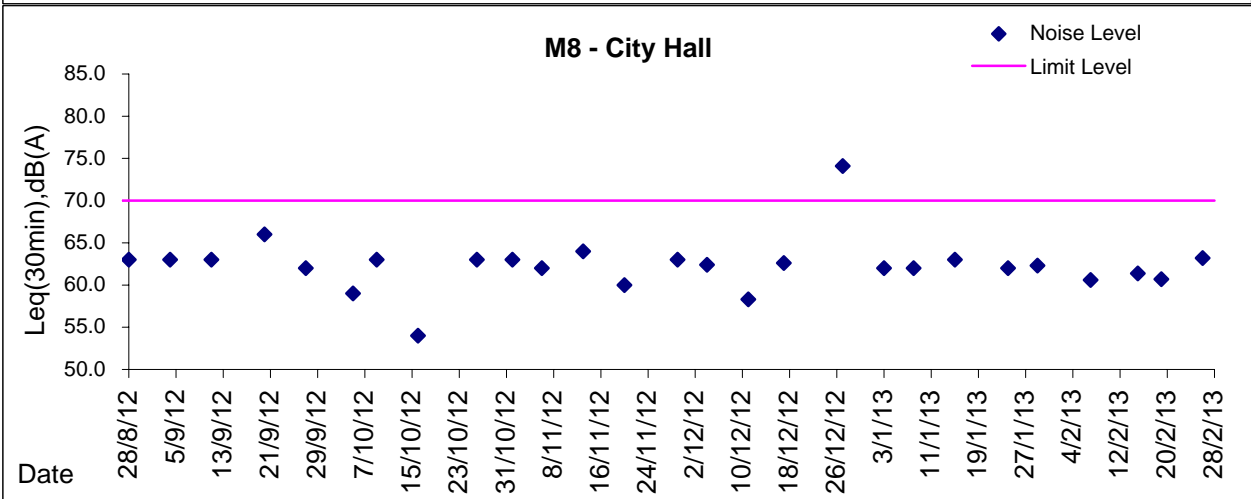
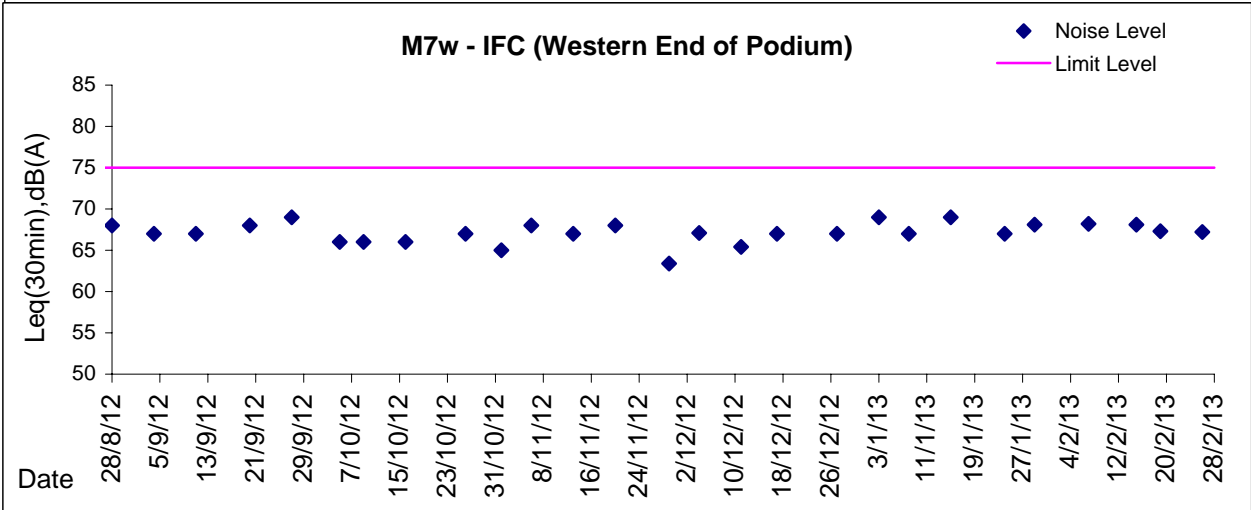
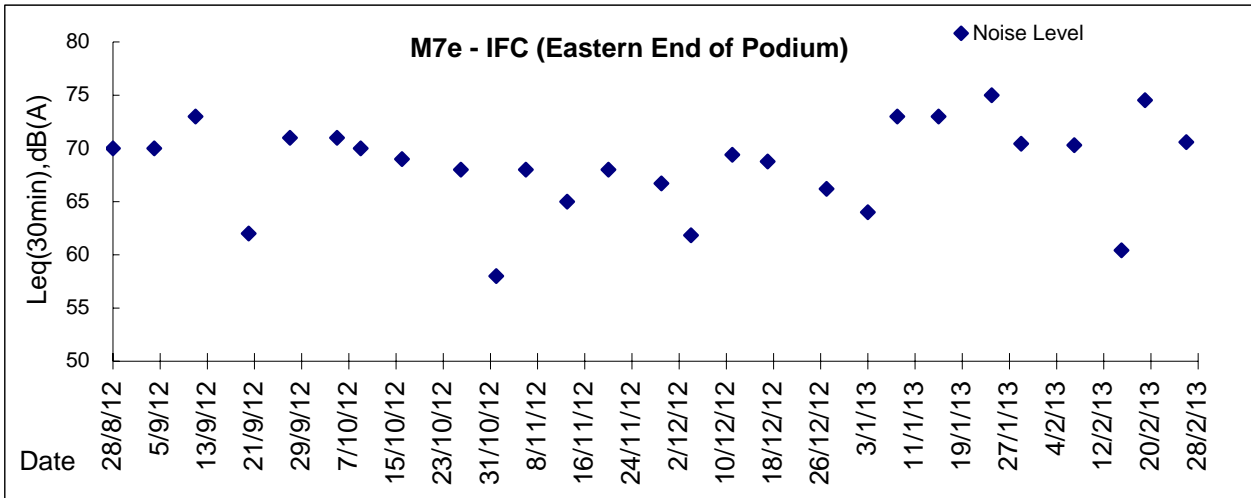
**Day Time (0700 - 1900hrs on normal weekdays)**







**Graphic Presentation of Noise Monitoring Result**  
**Day Time (0700 - 1900hrs on normal weekdays)**



\* Remark: M7e - IFC (Eastern End of Podium) is a reference monitoring station